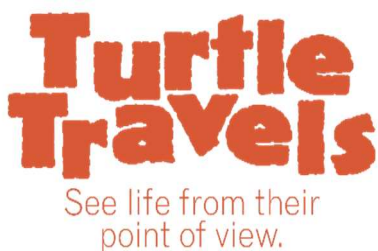




Summer Program Offerings for Groups June 9 - August 8, 2025

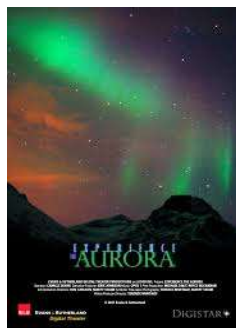
CSC EXHIBIT WALK-THROUGH VISITS

Days / Times:	Wednesdays-Fridays between 10:00 a.m. and 4:00 p.m.
Group Size:	Minimum of 10 participants per visit (plus adult leaders). Groups must have one adult for each group of 10 children.
Cost:	\$14 per participant, plus tax. One adult leader per 10 participants receives free admission. Groups may attend a public planetarium show on a seat available basis (current show schedule).



CSC PLANETARIUM SHOWS

Days / Times:	Wednesdays - Fridays between 10:15 a.m and 1:00 p.m
Program Length:	50 minutes
Group Size:	Maximum 65 total participants and adult leaders per show, minimum group size 12* Groups must have one adult for each group of 10 children.
Cost:	\$15 per participant, plus tax. Fee includes CSC walk-through. One adult leader per 10 participants receives free admission.
Show Options:	Complete list of CSC offerings available upon request. Summer 2025 Features: Legend of the Enchanted Reef (K – 3 rd) and Experience the Aurora (4 th and up)



HANDS-ON PROGRAMS

Color Magic – Investigate how colors and white light are connected. Make rainbows using prisms and experiment with colors using shaving cream, food coloring, and other colorful items. Learners will be able to take some of their experiments home! **Suitable for grades K-3**

Investigating Invertebrates – Meet some of CSC’s live invertebrates up close and learn all about them. Compare and contrast creatures from both land and water. **Most Suitable for grades K-4**

Birds of a Feather – Fly into this class to learn about how birds use their feathers, color, and other adaptations to help them survive. Learners will dissect a pigeon to investigate its body systems and what makes it able to fly. An additional fee of \$16.00 + tax per pigeon applies. 2 – 5 participants per pigeon. **Suitable for grades 5+**

Waves of Color – Discover how colors are formed from waves of light. Investigate different types of electromagnetic waves. Explore with lasers, bend light, and create color in this hands-on investigation. **Suitable for grades 4+**

AT CSC:

Days/Times: Wednesday-Fridays between 10:00 a.m. and 3:00 p.m.
Program Length: 50 minutes
Group Size: 24 students maximum, **minimum group size 12***
Cost: \$16 per person, plus tax. Fee includes CSC walk-through and the opportunity for a public planetarium show on a seat available basis. One adult leader per 10 participants receives free admission.

AT YOUR LOCATION:

Days/Times: Mondays-Fridays between 10:00 a.m. and 2:00 p.m.
Program Length: 50 minutes
Group Size: 30 students maximum, **minimum group size 12***
Cost: \$265 per program plus tax + mileage
(Mileage charge: current government rate (70¢ per mile))

If you book a combination of classroom and planetarium programs, for the same group of students on the same day, the following prices apply:

2 programs: \$19.50 per student

3 programs: \$24.50 per student

Questions about specific programs or specific needs for your group email:

Courtney Kimball at ckimball@catawbascience.org